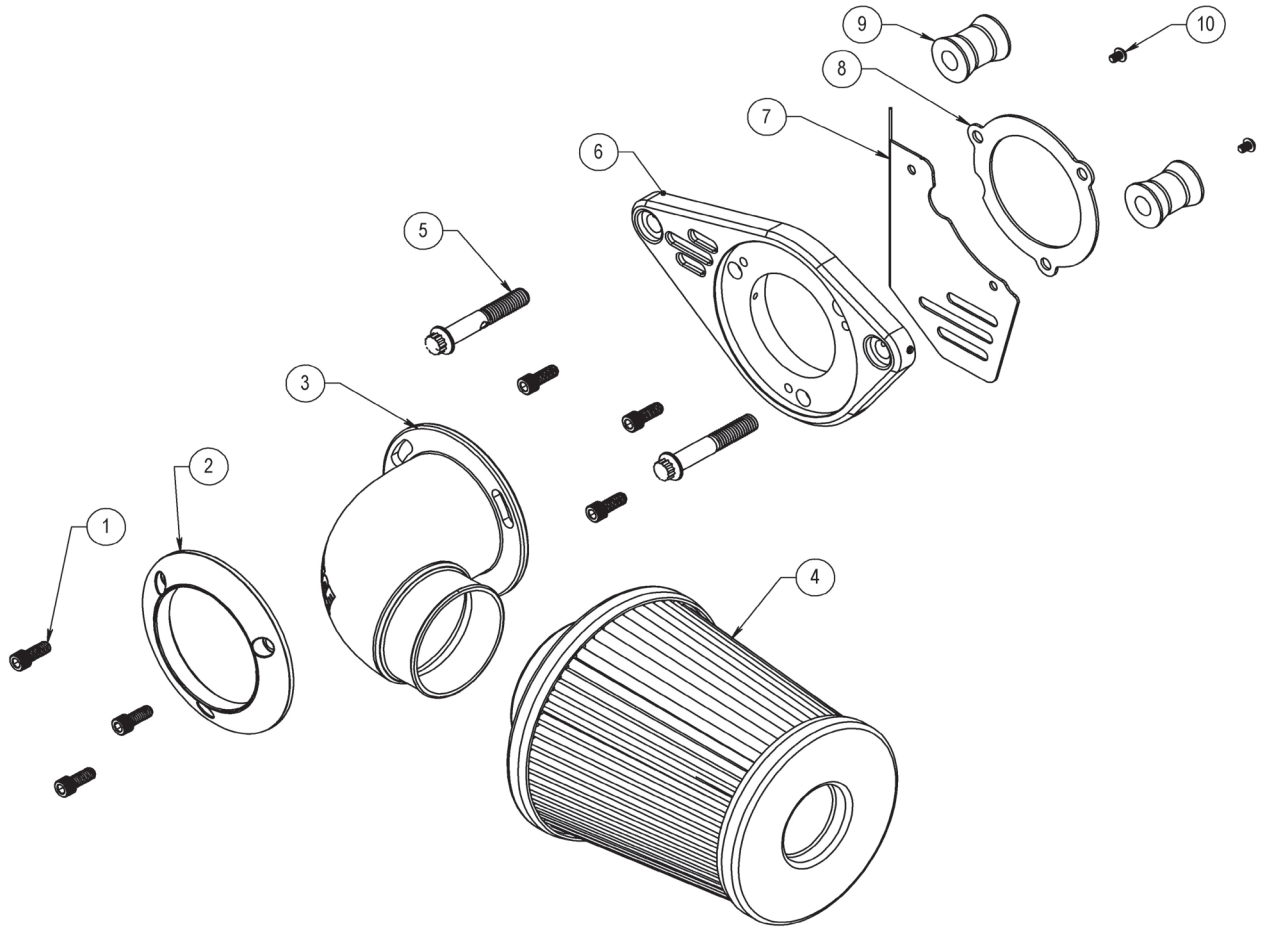




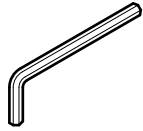
INSTALLATION INSTRUCTIONS: HARLEY-DAVIDSON 17-23 TOURING/18-23 SOFTAIL FALCON XL AIR INTAKE PART# 41124

Congratulations, you have purchased the finest air intake available for your motorcycle. Your Vance & Hines air intake is designed and crafted for performance, quality and style. Please follow the instructions below, check air intake kit for missing or damaged parts and if you need any assistance please contact our technical support line (562) 921-7461.

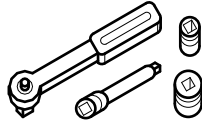


ITEM NO.	DESCRIPTION	QTY.
1	SCREW 1/4-20 X 5/8 STAINLESS	6
2	COVER RING	1
3	90 DEGREE ELBOW FORGED CF GLOSS W/ LOGO	1
4	FALCON XL FILTER - RED	1
5	12 PT BREATHER BOLT	2
6	M8 AIR INTAKE BACKING PLATE	1
7	THROTTLE BODY COVER	1
8	THROTTLE BODY GASKET	1
9	AIR FILTER STANDOFF	2
10	M4 X 6MM SCREW	2

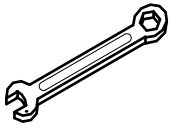
TOOLS REQUIRED



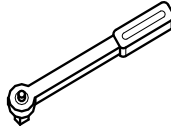
T27 Torx Wrench
3/16" Allen,
5/32" Allen
5mm Allen



1/4" or 3/8" Drive Ratchet
7/16", 7mm Hex Socket and
3/8" 12 Point Socket

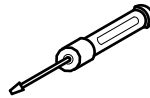


Combination Wrench
7/16"



Inch-Pound Torque
Wrench

Loctite 243 (blue)



Phillips Screwdriver
5/16" Nut Driver

DEM SYSTEM REMOVAL

1. Take off the OE air filter cover by removing the 5/16" x 1/2" OE button head cap screw in the center or the 5 x 1/4" Torx head screws around the outside of the cover. On some models the cap screw may be covered by a vanity cover. Carefully pull this cover off that is held on by velcro.
2. This will expose the filter element, which is then removed by taking out the three Torx head cap screws.
3. Remove the breather hoses from the cylinder head breather bolts by gently pulling on them.
4. Now remove the backing plate and gasket by unbolting the cylinder head breather bolts. Be sure that the surface is clean and dry.
5. Remove Induction Module Support bracket if equipped.



V&H AIR INTAKE INSTALLATION

1. For a clear understanding of this installation, it is best to refer to the exploded view diagram while reading these instructions.
2. Using three 1/4-20 x 5/8" screws (1), sandwich the throttle body gasket (8) in between the throttle body on the motorcycle and the air intake spacer (6). NOTE: DO NOT FULLY TIGHTEN THE 1/4-20 X 5/8" SCREWS, YOU WILL NEED TO HAVE THEM LOOSE TO FIT THE STANDOFFS LATER.
3. Install the standoffs (9) between the throttle body and the air intake spacer. Use the 12 point breather bolts (5) at 22-24 ft/lbs to secure the standoffs in place. Then fully tighten the three 1/4-20 x 5/8" screws (1). See Figure 1 below.

Note: Standoffs are symmetrical and can be installed in either direction.



FIGURE 1

4. Slide the cover ring (2) on the 90 degree tube (3). Then use the three 1/4-20 x 5/8" screws (1) to mount the cover ring (2) and the 90 degree tube (3) onto the air intake spacer (6). Fully tighten the screws while aligning the 90 degree tube (3) parallel with the ground. See Figure 2 below.



FIGURE 2

5. Install air filter (4) on to the 90 degree tube. Clock the air filter (4) as shown in Figure 3 with metal band towards inside of bike. Tighten hose clamp until the air filter (4) is secure from sliding off the 90 degree tube (3). Do not overtighten.



FIGURE 3

Emissions Notice:

In California, in order to meet Air Resources Board emissions requirements, certain aftermarket part applications have been identified as replacements, and others have received ARB Executive Orders. All other emissions related aftermarket parts are for competition use only. A list of replacement parts and EO parts, and corresponding fitment is provided at vanceandhines.com/california.

Warranty:

All Vance & Hines products are warranted against defects in material and workmanship for a period of 90 days. This warranty does not cover discoloration or rust. This warranty shall be limited to the repair or replacement of the product, which may be proven defective under normal use. Vance & Hines will not warranty any system that has been abused, misused, improperly installed or modified.

Dealers or distributors are not authorized to make dispositions binding upon Vance & Hines. Vance & Hines will not be responsible for any labor charges incurred in removing or replacing any system under warranty. A return authorization number and a copy of the original purchase invoice must accompany all returns. Parts returned without a return authorization may be refused.



Connect. Tune. Ride.

From the team that brought you The Fuelpak FP3, the best-selling ECU tuner in the world for Harley-Davidson motorcycles, the Vance & Hines FP4 is the most intuitive tuning tool on the market, giving you the power to control your motorcycle's tune and offers the best-in-industry support from our FP4 technicians, all from your smartphone.

- Download and Flash Maps
- Live Data Viewing
- Autotune Feature for Map Customization

Visit vanceandhines.com to learn more about FP4.

Qualified Manufacturer Declared 49-state Federal Emissions Compliant Part.



13861 ROSECRANS AVENUE / SANTA FE SPRINGS, CA 90670

SALES: (562) 921-5388
TECHNICAL: (562) 926-5291
FAX: (562) 802-0110

vanceandhines
.com