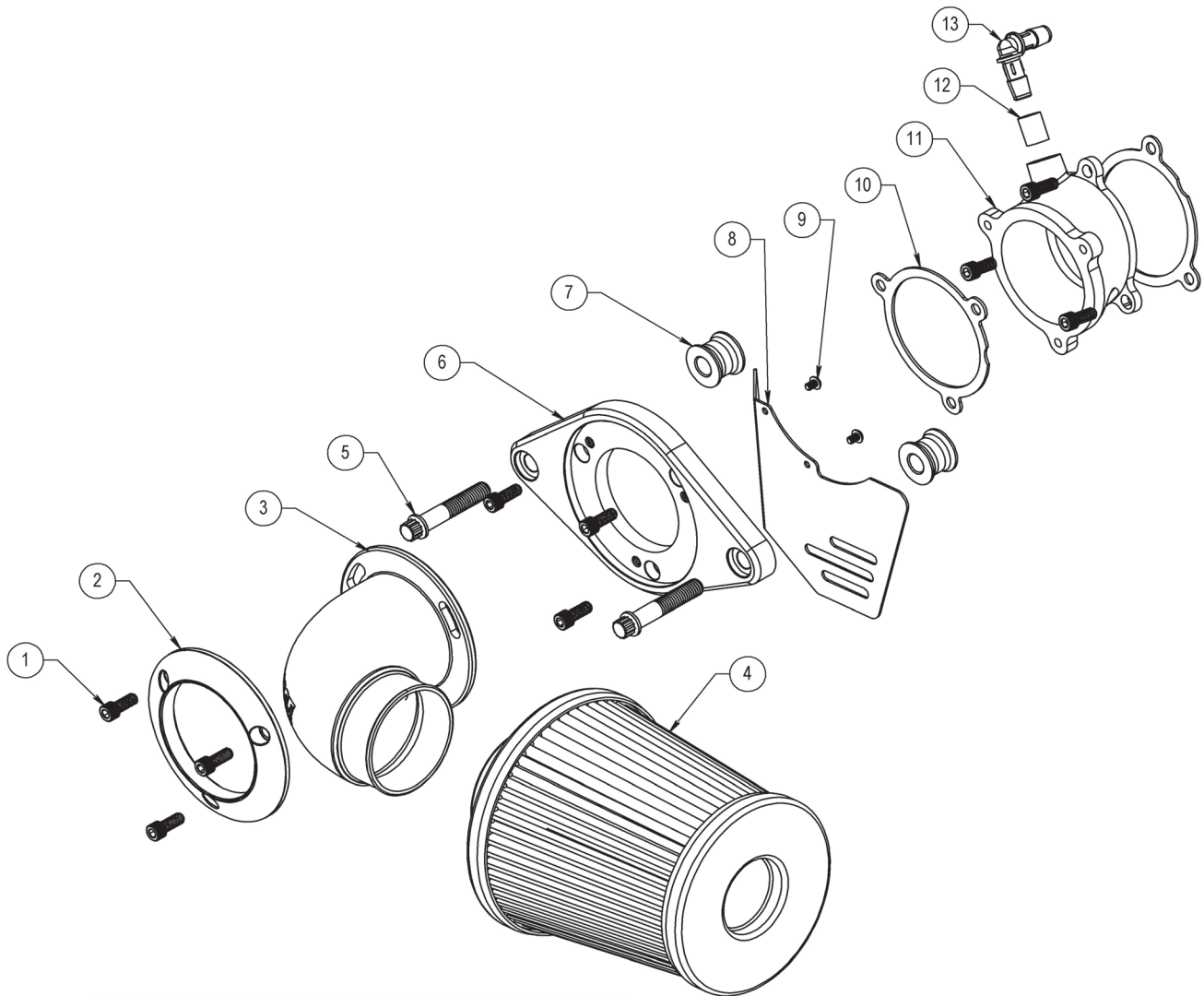




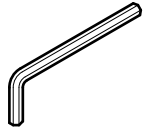
INSTALLATION INSTRUCTIONS: HARLEY 2024+ TOURING & 2025+ SOFTAIL FALCON XL AIR INTAKE PART# 41125

Congratulations, you have purchased the finest air intake available for your motorcycle. Your Vance & Hines air intake is designed and crafted for performance, quality and style. Please follow the instructions below, check air intake kit for missing or damaged parts and if you need any assistance please contact our technical support line (562) 921-7461.

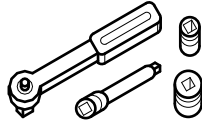


ITEM NO.	DESCRIPTION	QTY.
1	SHCS 1/4-20 X 5/8 STAINLESS	9
2	COVER RING	1
3	90 DEGREE ELBOW FORGED CF GLOSS W/ LOGO	1
4	FALCON XL FILTER - RED	1
5	12 POINT BREATHER BOLTS	2
6	V02 FALCON BACKING PLATE, BLACK	1
7	STANDOFF BLACK	2
8	THROTTLE BODY COVER	1
9	M4 X 6mm SCREW	2
10	THROTTLE BODY GASKET	2
11	AIR FILTER ADAPTER, 2024 TOURING	1
12	TUBE 3/8 ID X 1/2 OD X 5/8 LONG	1
13	BARBED TUBE FITTING, 90° PLASTIC	1

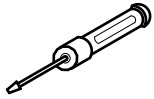
TOOLS REQUIRED



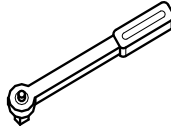
T27 Torx Wrench
3/16" Allen,
5/16" Allen



1/4" or 3/8" Drive Ratchet
7/16", 7mm Hex Socket and
3/8" 12 Point Socket



Phillips Screwdriver
5/16" Nut Driver



Inch-Pound Torque
Wrench

Loctite 243 (blue)

OEM SYSTEM REMOVAL

1. Begin by removing the OE air filter cover. On some models the cap screw may be covered by a vanity cover. Carefully pull this cover off carefully as it is held on by Velcro.
2. This will expose the filter element, which is then removed by twisting the filter and pulling rearward to remove filter from intake tube.
3. Remove the two flange head bolts securing the airbox assembly to the engine.
4. Remove the three Torx button head screws securing the airbox assembly to the throttle body. Note: One of the Torx button head screws is outside the airbox assembly below the fuel tank.
5. Carefully pull the airbox assembly away from the bike and remove the breather hose from the back of the airbox assembly by gently pulling on it.
6. Remove airbox assembly and make sure that the gasket surface is clean and dry and that no gasket material remains stuck to the throttle body.

V&H AIR INTAKE INSTALLATION

1. Install the breather hose from crankcase to air filter adapter tube fitting (13) before installing to the throttle body. Rotate tube fitting (13) towards motor before installation.
3. Install the air filter adapter (11) adapter to the throttle body. Use one of the supplied gaskets (10) and three 1/4-20 x 5/8" bolts (1), torque to 8 ft-lbs. See Figure 1.

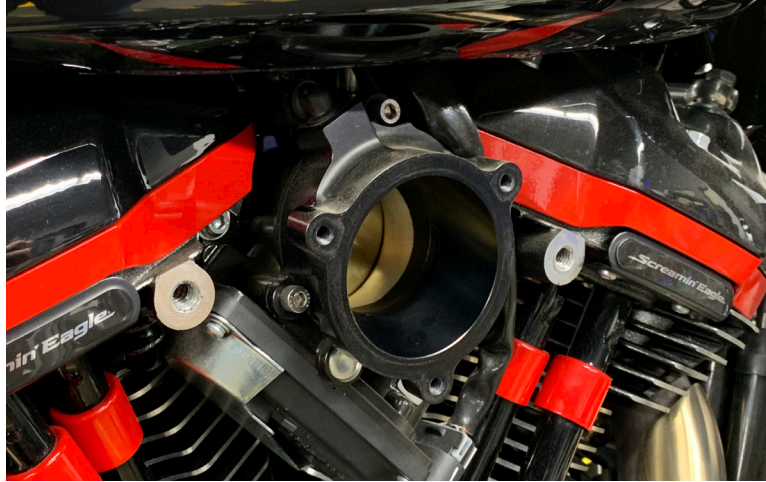


FIGURE 1

4. Install backing plate (6) to the air filter adapter (11) using three 1/4-20 x 5/8" bolts (1). Use gasket (10) between backing plate and air filter adapter. Leave bolts loose until after next step.
5. Install the two 3/8"-16 x 2" length 12 point cylinder head bolts (5) through backing plate (6) and spacers (7). Torque to 15 ft-lbs. See Figure 2.
6. Torque the three 1/4-20 x 5/8" bolts (1) from step 4 to 8 ft-lbs.



FIGURE 2

7. Slide the cover ring (2) on the 90 degree tube (3). Then use the three 1/4-20 x 5/8" screws (1) to mount the cover ring (2) and the 90 degree tube (3) onto the backing plate (6). Fully tighten the screws while aligning the 90 degree tube (3) parallel with the ground. See Figure 3



FIGURE 3

8. Install air filter (4) on to the 90 degree tube. Clock the air filter (4) as shown in Figure 4 with metal band towards inside of bike. Tighten hose clamp until the air filter (4) is secure from sliding off the 90 degree tube (3). Do not overtighten.



FIGURE 4

Emissions Notice:

In California, in order to meet Air Resources Board emissions requirements, certain aftermarket part applications have been identified as replacements, and others have received ARB Executive Orders. All other emissions related aftermarket parts are for competition use only. A list of replacement parts and EO parts, and corresponding fitment is provided at vanceandhines.com/california.

Warranty:

All Vance & Hines products are warranted against defects in material and workmanship for a period of 90 days. This warranty does not cover discoloration or rust. This warranty shall be limited to the repair or replacement of the product, which may be proven defective under normal use. Vance & Hines will not warranty any system that has been abused, misused, improperly installed or modified.

Dealers or distributors are not authorized to make dispositions binding upon Vance & Hines. Vance & Hines will not be responsible for any labor charges incurred in removing or replacing any system under warranty. A return authorization number and a copy of the original purchase invoice must accompany all returns. Parts returned without a return authorization may be refused.



Connect. Tune. Ride.

From the team that brought you The Fuelpak FP3, the best-selling ECU tuner in the world for Harley-Davidson motorcycles, the Vance & Hines FP4 is the most intuitive tuning tool on the market, giving you the power to control your motorcycle's tune and offers the best-in-industry support from our FP4 technicians, all from your smartphone.

- Download and Flash Maps
- Live Data Viewing
- Autotune Feature for Map Customization

Visit vanceandhines.com to learn more about FP4.

Qualified Manufacturer Declared 49-state Federal Emissions Compliant Part.



13861 ROSECRANS AVENUE / SANTA FE SPRINGS, CA 90670

SALES: (562) 921-5388
TECHNICAL: (562) 926-5291
FAX: (562) 802-0110

vanceandhines
.com