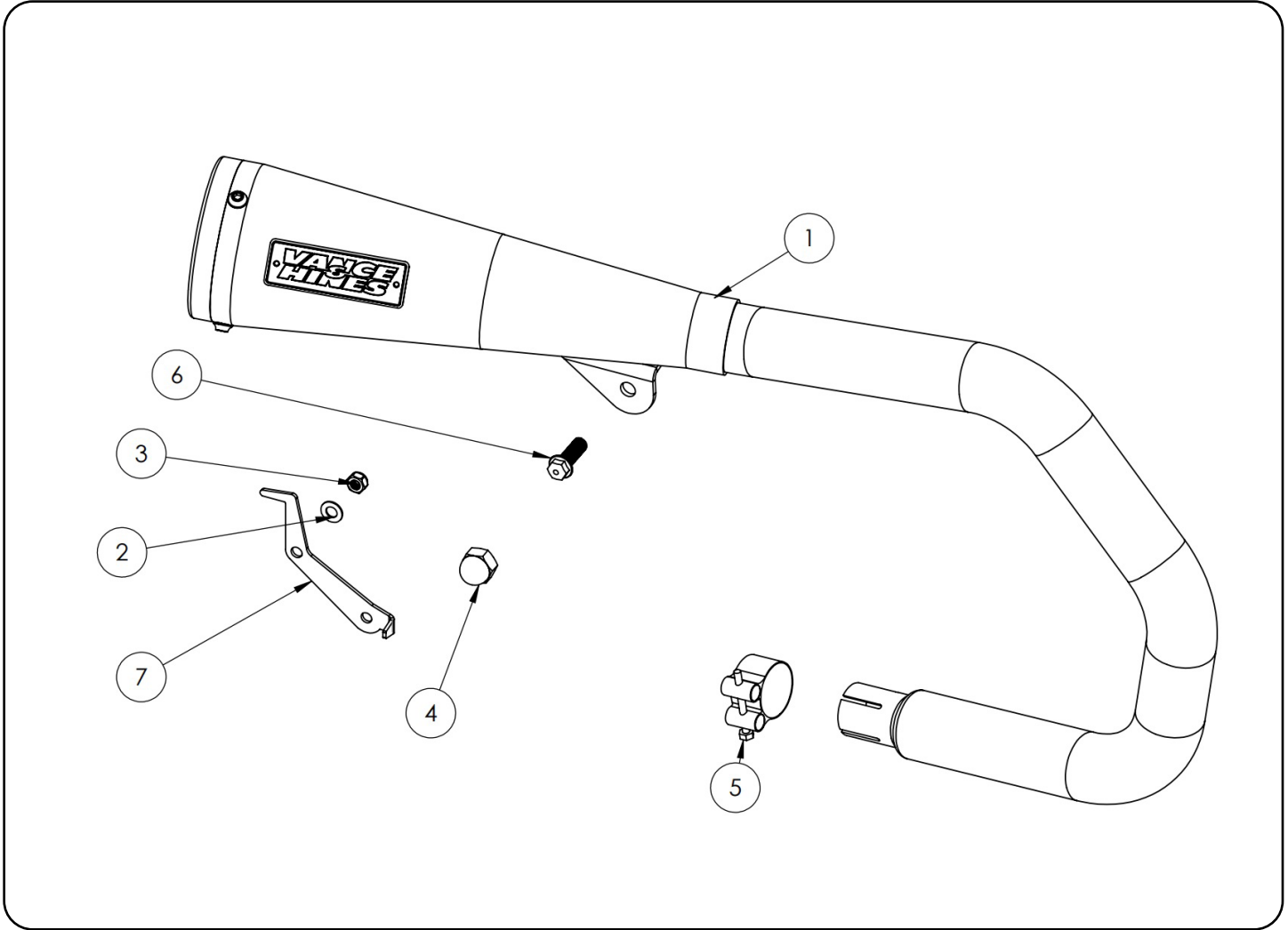


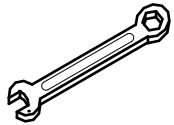
Congratulations, you have purchased the finest exhaust system available for your motorcycle. Your Vance & Hines exhaust is designed and crafted for performance, quality, and style. Please follow the instructions below, check exhaust system for missing or damaged parts and if you need any assistance please contact our technical support line (562) 921-7461.



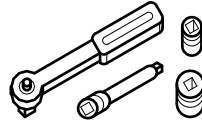
PARTS LIST

NO.	PART #	Description	QTY
1	H939RP	MUFFLER CAN ASSY	1
2	A1002HW	WASHER 7.0 X 12.7 X .71	1
3	A1001HW	NUT M6 10MM NY-LOC	1
4	A1000HW	ACORN NUT M10 X 1.25	1
5	A950HW	26-28MM T-BOLT CLAMP	1
6	A427HW	BOLT M8 X 1.25 X 25MM FLANGED	1
7	1397-P	BRAKE RESERVIOR RELOCATION BRACKET	1

TOOLS REQUIRED



Combination Wrenches:
8mm, 10mm, 12mm,
14mm, 17mm



3/8" Drive Ratchet w/ 8mm, 10mm,
12mm, 14mm Sockets

STOCK EXHAUST SYSTEM REMOVAL

1. Loosen the clamp attaching the muffler to the head pipe. **(Fig 1)**
2. Remove the bolt that attaches the muffler to the stock mounting bracket (under muffler) (Fig 1).
3. Remove nut attaching muffler to the shock mount. **(Fig 1)**
4. Remove the muffler assembly from the vehicle and remove the stock gasket from the head pipe.
5. Remove stud from upper shock mount. **(Fig 2)**
6. Install supplied acorn nut (A1000HW) on upper shock mount and torque to 20-23 ft-lbs (28-30 Nm)
7. Remove bolt holding rear brake master cylinder reservoir. Save bolt for re-use. **(Fig 3)**
8. Remove bolt holding reservoir bracket to foot peg mount. Save bolt for re-use. **(Fig 3)**

VANCE & HINES EXHAUST INSTALLATION

NOTE: Use appropriate Honda service manual procedures when referring to exhaust installation.

1. Using stock bolt removed in step #8 install reservoir mounting bracket (1397-P) ensuring lock tab is seated in pocket of foot peg bracket. **(Fig 4)**
2. Attach rear brake master cylinder reservoir to reservoir bracket using stock bolt from step #9 and supplied washer and nut. **(Fig 4)**
3. Slide muffler clamp (A950HW) on to muffler. Be sure the bolt head is inward with bolt head facing down for access. **(Fig 5)**
4. Slip muffler on to header and secure muffler to foot peg mounting bracket using supplied bolt (A427HW) **(Fig 6)**
5. Torque muffler clamp to 20-24 in-lbs (2.2.7 Nm)

FIGURE 1

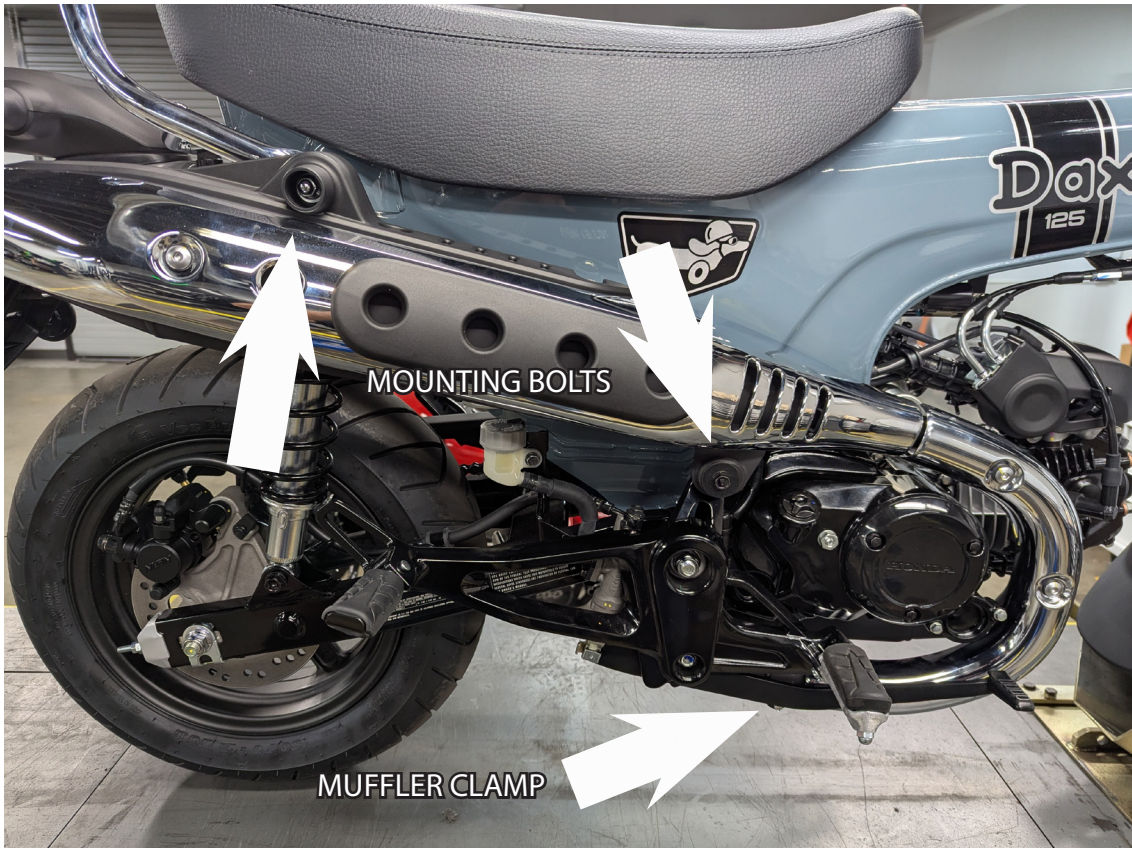


FIGURE 2



FIGURE 3

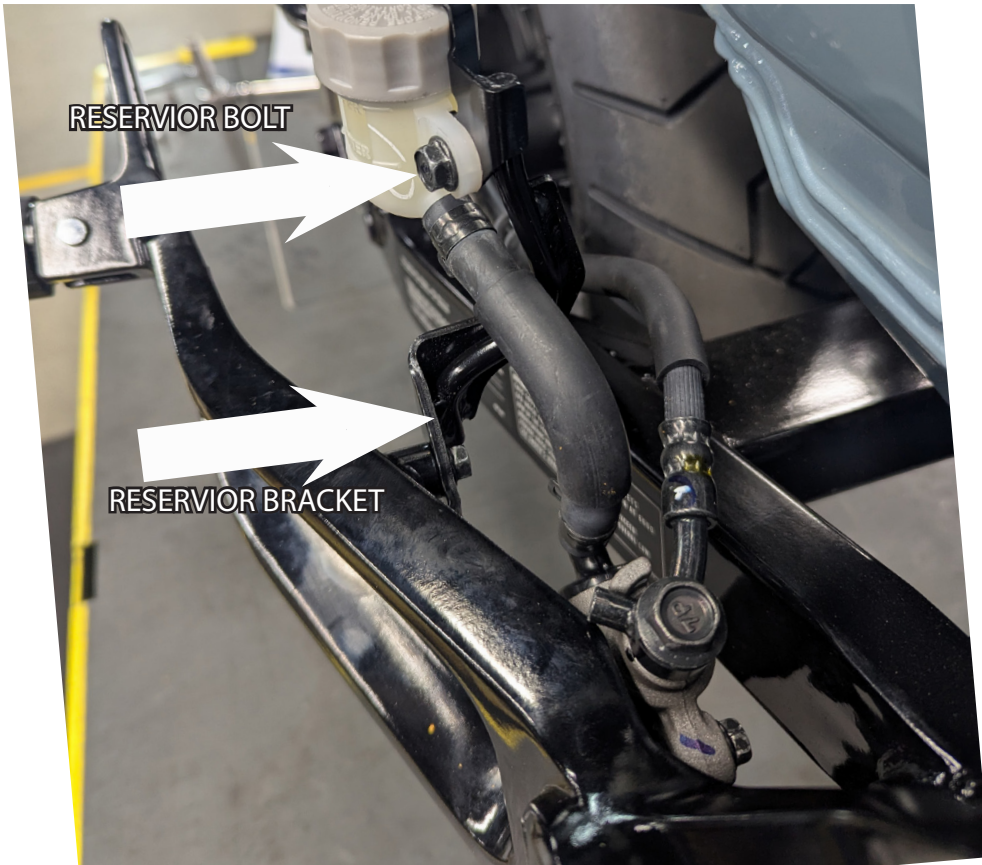


FIGURE 4



FIGURE 5



FIGURE 6



EXHAUST CARE (BLACK)

1. When installing a new set of black pipes, make sure your hands are clean and free of oil. After installation, thoroughly clean pipes with warm soapy water and a soft cloth. Dry with a clean towel to remove any residue before starting the motorcycle. Do NOT use anything abrasive to clean pipes.
2. Avoid long periods of idling as this can cause discoloration.
3. Intake leaks can cause the engine to run lean and overheat, this could lead to discoloration.
4. Make sure there are no exhaust leaks at the junction of the exhaust pipes and cylinder head. We recommend replacing gaskets if they are worn.

Emissions Notice:

In California, in order to meet Air Resources Board emissions requirements, certain aftermarket part applications have been identified as replacements, and others have received ARB Executive Orders. All other emissions related aftermarket parts are for competition use only. A list of replacement parts and EO parts, and corresponding fitment is provided at vanceandhines.com/california.

Warranty:

All Vance & Hines products are warranted against defects in material and workmanship for a period of 90 days. This warranty does not cover discoloration or rust. This warranty shall be limited to the repair or replacement of the product, which may be proven defective under normal use. Vance & Hines will not warranty any system that has been abused, misused, improperly installed or modified.

Dealers or distributors are not authorized to make dispositions binding upon Vance & Hines. Vance & Hines will not be responsible for any labor charges incurred in removing or replacing any system under warranty. A return authorization number and a copy of the original purchase invoice must accompany all returns. Parts returned without a return authorization may be refused.

Please Note: Every effort is made for Vance & Hines Exhaust Systems to provide improved cornering clearance. However, due to design and space limitations on some motorcycle models, ground and cornering clearance may not be improved and in some cases may be reduced. Be sure to follow proper installation instructions.

13861 ROSECRANS AVENUE / SANTA FE SPRINGS, CA 90670
SALES: (562) 921-5388
TECHNICAL: (562) 926-5291
FAX: (562) 802-0110

vanceandhines
.com