

A close-up photograph of a motorcycle headlight. The headlight is oval-shaped with a clear lens. In the center of the lens, the words "VANCE HINES" are embossed in a stylized, italicized, sans-serif font. The background of the headlight is a dark, textured mesh. The lighting is bright, highlighting the metallic rim and the embossed text.

**VANCE  
HINES**

*PREFERRED DEALER PRODUCT GUIDE*





# ***THANK YOU***

---

## ***FOR YOUR CONTINUED SUPPORT***

*Terry Vance*  
Terry Vance | Co-Founder

*Byron Hines*  
Byron Hines | Co-Founder

**VANCE  
HINES**



# 2020 V-TWIN PRODUCTS



04

## VO2 AIR INTAKES

VO2 Naked | VO2 Rogue | VO2 90 |  
VO2 Cage Fighter | VO2 X | VO2 Blade

06

## FUEL MANAGEMENT

Fuelpak FP3 | Fuelpak Pro

08

## TOURING EXHAUST

Slip-Ons | Headers | Full Systems

14

## SOFTAIL EXHAUST

Full Systems | Slip-Ons

18

## DYNA EXHAUST

Full Systems | Slip-Ons

20

## SPORTSTER EXHAUST

Full Systems | Slip-Ons

22

## STREET / V-ROD EXHAUST

Slip-Ons | Full Systems

24

## PRODUCTION TWINS

2020 XG750R

25

## ENGINE COMPONENTS

Valvetrain | Cams | Pistons

@VANCEANDHINES



# MORE AIR >> MORE POWER

*Easy No Hassle Bolt-And-Go Install*

*Increased Air Flow Improves Performance*

*Washable High-Flow Filter Element*

*Made in the U.S.A.*



## V02 NAKED

17-20 Touring (1)	71035
17-20 Touring (2)   18-20 Softail	71031
14-16 Touring (3)   16-17 Softail (4)	71029
08-13 Touring	71003
99-07 Touring (5)(6)   00-15 Softail (7)   99-07 Dyna	71005
08-17 Dyna	71007
91-20 Sportster (8)	71011
14-20 Street (8)	71028

(1) Fits with OEM air filter cover. (2) Does not fit with OEM air filter cover. Accessory air filter cover recommended (3) 2008-2015 CVO models require separate purchase of accessory air cleaner cover (4) Fits 2011-2012 CVO Convertible, 2013-2014 CVO Breakout, 2014-2015 CVO Deluxe (5) Does not fit 1999-2001 fuel injected Touring Models (6) 2006-2007 CVO Ultra Classic requires purchase of accessory air cleaner cover (7) Does not fit 2011-2012 CVO Convertible, 2013-2014 CVO Breakout, 2014-2015 CVO Deluxe (8) Does not fit with OEM air filter cover. Accessory air filter cover recommended

17-20 Touring w/ Stock Cover

FOR CLOSED COURSE COMPETITION USE ONLY. NOT INTENDED FOR STREET USE.

Full Product Offering: [vanceandhines.com](http://vanceandhines.com) | (800) 592-2529 | Santa Fe Springs, CA



## VO2 ROGUE

<b>Touring</b>		
2017-2020	Chrome	70081
2017-2020	Black	40081
2008-2016	Chrome	70075
2008-2016	Black	40075
2002-2007	Chrome	70073
2002-2007	Black	40073
<b>Softail</b>		
2018-2020	Chrome	70085
2018-2020	Black	40085
2016-2017	Chrome (1)	70075
2016-2017	Black (1)	40075
2000-2015	Chrome (2)	70073
2000-2015	Black (2)	40073
<b>Dyna</b>		
1999-2017	Chrome	70073
1999-2017	Black	40073
<b>Sportster</b>		
1991-2020	Chrome	70071
1991-2020	Black	40071

(1) Fits 2011-2012 CVO Convertible, 2013-2014 CVO Breakout, 2014-2015 CVO Deluxe  
(2) Does not fit 2011-2012 CVO Convertible, 2013-2014 CVO Breakout, 2014-2015 CVO Deluxe

## VO2 90

<b>Touring</b>		
2008-2016	Chrome (3)	70022
2008-2016	Black (3)	40022
2002-2007	Chrome (3)(4)	70025
2002-2007	Black (3)(4)	40025
2002-2007	Black / Chrome (3)(4)	70035
<b>Softail</b>		
2016-2017	Chrome (5)	70022
2016-2017	Black (5)	40022
2000-2015	Chrome (6)	70025
2000-2015	Black (6)	40025
2000-2015	Black / Chrome (6)	70035
<b>Dyna</b>		
1999-2017	Chrome	70025
1999-2017	Black	40025
1999-2017	Black / Chrome	70035
<b>Sportster</b>		
1991-2020	Black	40029

(3) Does not fit models equipped with Twin-Cooled Engine, fairing lower glove boxes, or fairing lower speakers (4) Does not fit 1999-2001 fuel injected Touring Models (5) Fits 2011-2012 CVO Convertible, 2013-2014 CVO Breakout, 2014-2015 CVO Deluxe (6) Does not fit 2011-2012 CVO Convertible, 2013-2014 CVO Breakout, 2014-2015 CVO Deluxe

## VO2 CAGE FIGHTER

<b>Touring</b>		
2017-2020	Brushed	70066
2008-2016	Brushed	70065
2002-2007	Brushed	70067
<b>Softail</b>		
2018-2020	Brushed	70087
2016-2017	Brushed (7)	70065
2000-2015	Brushed (8)	70067
<b>Dyna</b>		
1999-2017	Brushed	70067
<b>Sportster</b>		
1991-2020	Brushed	70069

(7) Fits 2011-2012 CVO Convertible, 2013-2014 CVO Breakout, 2014-2015 CVO Deluxe  
(8) Does not fit 2011-2012 CVO Convertible, 2013-2014 CVO Breakout, 2014-2015 CVO Deluxe



# WARNING: VO2 AIR INTAKE WILL UNLEASH THE POWER OF YOUR MOTORCYCLE

## VO2 X

<b>Touring</b>		
2017-2020	Chrome	72045
2017-2020	Black	42045
2008-2016	Chrome	72043
2008-2016	Black	42043
<b>Softail</b>		
2018-2020	Chrome	72047
2018-2020	Black	42047
2000-2015	Chrome (9)	72041
2000-2015	Black (9)	42041
<b>Dyna</b>		
1999-2017	Chrome	72041
1999-2017	Black	42041
<b>Sportster</b>		
1991-2020	Chrome	72039
1991-2020	Black	42039

(9) Does not fit 2011-2012 CVO Convertible, 2013-2014 CVO Breakout, 2014-2015 CVO Deluxe



## VO2 BLADE

<b>Touring</b>		
2017-2020	Chrome	70095
2017-2020	Black	40095
2008-2016	Chrome	70093
2008-2016	Black	40093
<b>Softail</b>		
2018-2020	Chrome	70097
2018-2020	Black	40097
2000-2015	Chrome (10)	70091
2000-2015	Black (10)	40091
<b>Dyna</b>		
1999-2017	Chrome	70091
1999-2017	Black	40091
<b>Sportster</b>		
1991-2020	Chrome	70089
1991-2020	Black	40089

(10) Does not fit 2011-2012 CVO Convertible, 2013-2014 CVO Breakout, 2014-2015 CVO Deluxe



@VANCEANDHINES

FOR CLOSED COURSE COMPETITION USE ONLY. NOT INTENDED FOR STREET USE.

Full Product Offering: [vanceandhines.com](http://vanceandhines.com) | (800) 592-2529 | Santa Fe Springs, CA



**FUELPAK FP3**

**TUNING  
MADE  
SIMPLE.**





# VISIT [FUELPAK.VANCEANDHINES.COM](http://FUELPAK.VANCEANDHINES.COM) FOR MORE INFORMATION



DOWNLOAD THE FP3 APP NOW!



The Fuelpak FP3 is the best-selling ECU tuner in the world for Harley-Davidson motorcycles because it is the most intuitive tool on the market, giving you the power to control every aspect of your motorcycle's tune, view live sensor data, calibrate your speedometer, read and clear trouble codes, utilize a live sensor data display, and offers best in industry support from our FP3 technicians, all from your smartphone. The Fuelpak FP3 also backs up your OEM calibration and gives you access to Vance & Hines' library of thousands of dyno-tuned maps, made by our trained dyno technicians and designed for any combination of performance exhausts and air cleaner components.

## FUELPAK FP3

2014-2020	Fuelpak FP3 Can Bus (Touring)	66005
2007-2013	Fuelpak FP3 J1850 (Touring) (1)	66007
2011-2020	Fuelpak FP3 Can Bus (Softail)	66005
2007-2010	Fuelpak FP3 J1850 (Softail) (2)	66007
2012-2017	Fuelpak FP3 Can Bus (Dyna)	66005
2007-2011	Fuelpak FP3 J1850 (Dyna) (2)	66007
2014-2020	Fuelpak FP3 Can Bus (Sportster)	66005
2007-2013	Fuelpak FP3 J1850 (Sportster)	66007
2015-2020	Fuelpak FP3 Can Bus (Street)	66005

(1) Fits 2009-2013 CVO models  
(2) Does not fit CVO models



### BLUETOOTH CONNECTIVITY

Connecting wirelessly by Bluetooth to iPhone or Android Smartphones, Fuelpak FP3 uses Flash technology to recalibrate engine parameters.



### MAINTENANCE

- Read and Clear Diagnostic Trouble Codes
- Keep valuable maintenance logs



### AUTOTUNE

- Calibrates Map for Unique Exhaust, Engine Component & Fuel Grade Combinations
- Uses Stock O2 Sensors
- Only Requires 1-2 Hours of Ride Time Over 3 Tuning Sessions



### CUSTOMER SUPPORT

- Contact V&H Directly Through the FP3 App
- Users Can Upload Their Map to V&H Technicians to Adjust Remotely
- Constantly Evolving Features Available Via App and Firmware Updates



### LIVE SENSOR DATA

- Real Time Sensor Read out Via Bluetooth From Your Smart Phone / Tablet
- RPM, Engine Temperature, Fuel Economy, ETC.
- Calculated HP and TQ numbers
- Use on your handlebars as a configurable dashboard



### ADVANCED TUNING

- Full Access to Critical Tables Such as Volumetric Efficiency, Air/Fuel Ratio, Spark Advance & More
- Support for Engine Component Upgrades Such as Cams, Displacement & Injector Size
- Speedometer Calibration uses GPS satellite signals to calibrate your speedo.

## TAKE YOUR FP3 A STEP FURTHER

Learn More About Fuelpak Pro at [Fuelpakpro.vanceandhines.com](http://Fuelpakpro.vanceandhines.com)



FOR CLOSED COURSE COMPETITION USE ONLY. NOT INTENDED FOR STREET USE.

Full Product Offering: [vanceandhines.com](http://vanceandhines.com) | (800) 592-2529 | Santa Fe Springs, CA

@VANCEANDHINES



***FEATURED PRODUCT***





# FEATURED PRODUCT

The All-New Game-Changing Torquer 450 Slip-Ons; the Best Sound, Best Performance, and Best Style for Your Harley Touring Model, Starting at \$599.



## TORQUER 450

- 50-State Emissions Compliant\*
- Designed & Manufactured In The U.S.A.
- Massive Spin-Formed 4.5-inch Round Mufflers
- Patent Pending Baffle Design For Best Sound & Power

Touring		
2017-2020	Chrome	16674
2017-2020	Black	46674
1995-2016	Chrome	16673
1995-2016	Black	46673

\*Qualified Manufacturer Declared Replacement Part on all 2009 and later Harley-Davidson Touring Models

FOR CLOSED COURSE COMPETITION USE ONLY. NOT INTENDED FOR STREET USE.

Full Product Offering: [vanceandhines.com](http://vanceandhines.com) | (800) 592-2529 | Santa Fe Springs, CA

@VANCEANDHINES



**TOURING**





## DAYTONA 400

- Deep, Aggressive Tone
- CNC Machined Billet End Caps
- Large 4-inch Round Muffler Body
- Fits Saddlebags With Extended Skirts
- 50-State Emissions Compliant

Touring			
2017-2020	Chrome*		16583
2017-2020	Black*		46583
1995-2016	Chrome**		16581
1995-2016	Black**		46581
Baffles			
2017-2020	Quiet Baffle		23707
1995-2016	Quiet Baffle		23705

\* Qualified manufacturer declared replacement part on 2017-2020 Touring models  
\*\* Qualified manufacturer declared replacement part on 2009-2016 Touring models

## ELIMINATOR 400

- CNC Machined Billet End Caps
- Large 4-inch Round Muffler Body
- Fits Saddlebags with Extended Skirts
- 50-State Emissions Compliant

Touring			
2017-2020	Chrome*		16714
2017-2020	Black*		46714
2017-2020	Chrome / Black Tips*		16708
1995-2016	Chrome**		16703
1995-2016	Black**		46703
1995-2016	Chrome / Black Tips**		16706
Baffles			
2017-2020	Quiet Baffle		23701
1995-2016	Quiet Baffle		23703

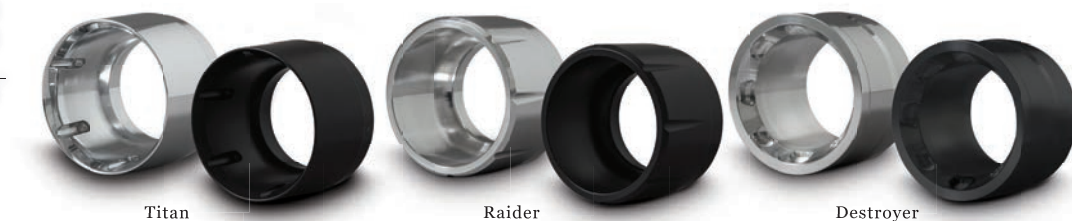
\* Qualified manufacturer declared replacement part on 2017-2020 Touring models  
\*\* Qualified manufacturer declared replacement part on 2009-2016 Touring models

## OVERSIZED 450

- Aggressive, Throaty Tone
- Massive 4.5-inch Round Mufflers
- CNC Machined Billet End Caps
- 50-State Emissions Compliant

Touring			
2017-2020	Titan Chrome / Chrome Tips*		16650
2017-2020	Titan Black / Black Tips*		46650
1995-2016	Titan Chrome / Chrome Tips**		16549
2017-2020	Raider Black / Black Tips*		46658
2017-2020	Destroyer Chrome / Chrome Tips*		16654
2017-2020	Destroyer Black / Black Tips*		46654
1995-2016	Destroyer Chrome / Chrome Tips**		16553
1995-2016	Destroyer Chrome / Black Tips**		16555
1995-2016	Destroyer Black / Black Tips**		46553
Baffles			
1995-2016	Quiet Baffle		21884

\* Qualified manufacturer declared replacement part on 2017-2020 Touring models  
\*\* Qualified manufacturer declared replacement part on 2009-2016 Touring models



## HI-OUTPUT

- Aggressive Stepped Styling
- Fits Saddlebags with Extended Skirts
- 50-State Emissions Compliant

Touring			
2017-2020	Chrome*		16463
2017-2020	Black*		46463
1995-2016	Chrome**		16455
1995-2016	Black**		46759

Baffles			
1995-2020	Quiet Baffle		21905

\* Qualified manufacturer declared replacement part on 2017-2020 Touring models  
\*\* Qualified manufacturer declared replacement part on 2009-2016 Touring models

## MONSTER ROUND

- Massive 4-inch Round Muffler Body
- Full Coverage Heat Shields
- CNC Machined End Cap
- 50-State Emissions Compliant

Touring			
2017-2020	Chrome*		16780
2017-2020	Black*		46780
1995-2016	Chrome**		16773

\* Qualified manufacturer declared replacement part on 2017-2020 Touring models  
\*\* Qualified manufacturer declared replacement part on 2009-2016 Touring models

## MONSTER OVALS

- Massive 5.5-inch Oval Muffler Body
- Full Coverage Heat Shields
- CNC Machined End Cap
- 50-State Emissions Compliant

Touring			
1995-2016	Chrome		16755
2009-2013	Chrome (EC Compliant)		16787

## TWIN SLASH ROUND

- Best Value Touring Slip-on
- Large 4-inch Round Muffler Body
- Signature Twin Slash End Treatment
- 50-State Emissions Compliant

Touring			
2017-2020	Chrome*		16672
1995-2016	Chrome**		16763

Baffles			
1995-2020	Quiet Insert		21892

\* Qualified manufacturer declared replacement part on 2017-2020 Touring models  
\*\* Qualified manufacturer declared replacement part on 2009-2016 Touring models



FOR CLOSED COURSE COMPETITION USE ONLY. NOT INTENDED FOR STREET USE.

Full Product Offering: [vanceandhines.com](https://vanceandhines.com) | (800) 592-2529 | Santa Fe Springs, CA

@VANCEANDHINES



***TOURING***

SIX SP





## POWER DUALS

- Helps Reduce Exhaust Temperatures
- Full Coverage Heat Shields
- Includes Dual Bung Oxygen Sensor Ports (18mm & 12mm)

Touring		
2017-2020	Chrome (1)	16871
2017-2020	Black (1)	46871
2009-2016	Chrome (2)	16832
2009-2016	Black (2)	46832

(1) Trike Adaptor Kit (16784 Chrome or 46784 Black) required for use on 2017-2019 Trike models  
(2) Trike Adaptor Kit (16785) required for use on 2009-2016 Trike models

## DRESSER DUALS

- Classic True Dual Design
- Full Coverage Heat Shields
- Includes Dual Bung Oxygen Sensor Ports (18mm & 12mm)\*

Touring		
2017-2020	Chrome	17651
2017-2020	Black	47651
2009-2016	Chrome (3)	16752
2009-2016	Black (3)	46752
1995-2008	Chrome (4)	16799
1995-2008	Black (4)	46799

(3) Trike Adaptor Kit (16785) required for use on 2009-2016 Trike models  
(4) 1995-2006 Requires 16925 O2 Sensor Plug Kit kit

## TRIKE DELUXE

- Designed for Harley-Davidson Trike Models
- Monster Oval Sound & Performance
- Improved Ground Clearance Over Stock Mufflers
- Rolled Stainless Steel End Treatment

Touring		
2009-2020	Brushed* (5)(6)	16789

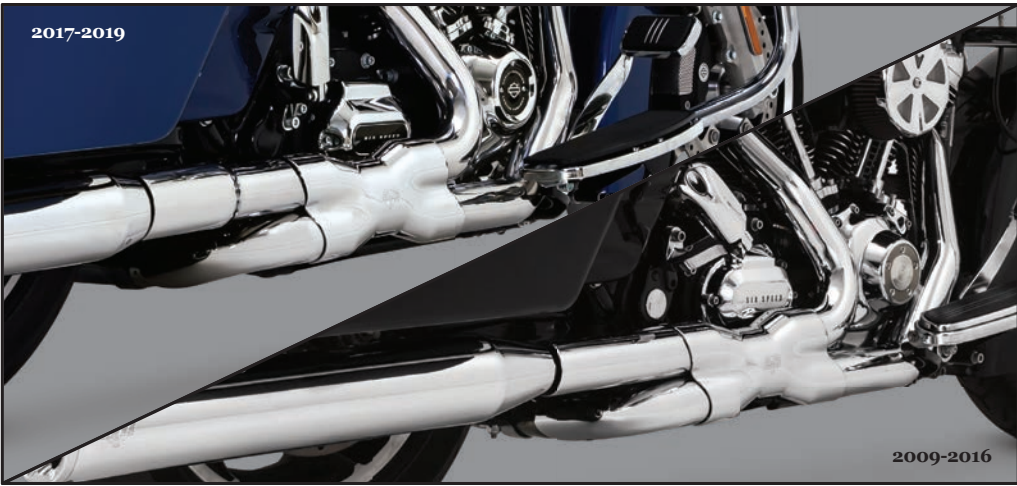
(5) 2017-2020 Models require trike adapter kit 16784 when paired with Power Duals  
(6) 2009-2016 Models require trike adapter kit 16785 when paired with aftermarket headers  
\* Qualified manufacturer declared replacement part on 2009-2020 Touring models

## TWIN SLASH ROUND

- 4-inch Round Mufflers
- Signature Twin Slash End Treatment
- Optional Quiet Inserts

Touring		
2017-2020	Chrome* (7)(8)	16796
2015-2016	Chrome** (8)(9)	16798
Baffles		
2015-2020	Quiet Insert	21892

(7) 2017-2019 Models require trike adapter kit 16784 when paired with Power Duals  
(8) For Freewheeler models only.  
(9) 2015-2016 Models require trike adapter kit 16785 when paired with aftermarket headers  
\* Qualified manufacturer declared replacement part on 2017-2020 Touring models  
\*\* Qualified manufacturer declared replacement part on 2015-2016 Touring models



## PRO PIPE

- Broad, Usable Torque Increase
- Large Merge Collector
- Quiet and Competition Baffles Available
- 4.5-inch Muffler Body At Exit

Touring		
2017-2020	Chrome	17583
2017-2020	Black	47583
2010-2016	Chrome	17559
2010-2016	Black	47561
1999-2008	Chrome (9)	17557
1999-2008	Black (9)	47557

Baffles		
Multi	Quiet Baffle	21906
Multi	Competition Baffle	26529

(9) Oxygen Sensor Plug Kit (16925) required when used on 1999-2006 models



## BIG RADIUS 2-INTO-2

- Custom Bike Styling
- Radius-Curved Louvered Baffles
- Full Coverage Heat Shields
- Optional Quiet Baffle Available

Touring		
2017-2020	Chrome	26073
2017-2020	Black	46073
2010-2016	Chrome	26042
Baffles		
Multi	Quiet Baffle	23081
Multi	Standard Baffle	23711



## TRIKE ADAPTOR KIT

This kit extends the standard Vance & Hines 2009-2016 Touring head pipes to allow for proper fitment on Harley Trike models.

Touring		
2017-2020	Chrome	16784
2017-2020	Black	46784
2015-2016	Trike Adaptor Kit	16785



FOR CLOSED COURSE COMPETITION USE ONLY. NOT INTENDED FOR STREET USE.

Full Product Offering: [vanceandhines.com](https://vanceandhines.com) | (800) 592-2529 | Santa Fe Springs, CA

@VANCEANDHINES



**SOFTAIL**





## STAINLESS 2-INTO-1 UPSWEEP

- High Grade 304 Stainless Steel (ASTM A269)
- Oversized 2-into-1 Merge Collector
- Megaphone Muffler
- Race Inspired Heat Shield
- Fits Forward & Mid Control Models\*

Softail		
2018-2020	Brushed* (1)	27623

(1) Fits 2018-2020 Street Bob, Low Rider, Fat Bob, Slim, & Deluxe Models

\*Adaptor for Mid Controls Included



## PRO PIPE

- Broad/Usable Torque Increase
- Large Merge Collector
- Quiet and Competition Baffles Available
- 4.5-inch Muffler Body At Exit

Softail		
2018-2020	Chrome (2)(3)	17587
2018-2020	Black (2)(3)	47587
2018-2020	Chrome (4)	17589
2018-2020	Black (4)	47589
2012-2017	Chrome	17571
2012-2017	Black	47527
1986-2011	Chrome (5)(6)	17547

Baffles		
Multi	Quiet Baffle	21906
Multi	Competition Baffle	26529

(2) Fits 2018-2020 Street Bob, Low Rider, Fat Bob, Slim, Deluxe, Sport Glide & Heritage Classic Models (3) Sport Glide & Heritage Classic Models require saddlebag bracket 21946 (4) Fits 2018-2020 Fat Boy & Breakout Models (5) Oxygen sensor plug kit (16925) required when used on 1986-2006 models (6) Does not fit FXCW Rocker, FXCWC Rocker C or 2009 FXSTSSE Springer Softail



## BIG RADIUS 2-INTO-2

- Custom Bike Styling
- Radius Curved Louvered Baffles
- Full Coverage Heat Shields
- Optional Quiet Baffle Available

Softail		
2018-2020	Chrome (7)(8)	26077
2018-2020	Black (7)(8)	46077
2018-2020	Chrome (9)	26075
2018-2020	Black (9)	46075
2012-2017	Chrome (10)	26065
2012-2017	Black (10)	46065
1986-2011	Chrome (11)	26069
1986-2011	Black (11)	46069

Baffles		
Multi	Quiet Baffle	23081
Multi	Standard Baffle	23711

(7)Fits 2018-2020 Street Bob, Low Rider, Fat Bob, Slim, Deluxe & Heritage Classic Models (8) Fits Sport Glide & Heritage Models with 21946 Saddlebag Bracket (9) Fits 2018-2020 Fat Boy, FXDR & Breakout Models (10) Fits FXSB Breakout and FXSBSE CVO Breakout (11) Oxygen sensor plug kit (16925) required when used on 1986-2006 models



## MINI-GRENADES

- Aggressive, Deep Tone
- Signature Three-Step Design
- CNC Machined Billet End Caps

Softail		
2018-2020	Chrome (12)	16878
2018-2020	Black (12)	46878
2018-2020	Black (13)	46880

Baffles		
Multi	Quiet Baffle	21947

(12) Fits 2018-2020 Street Bob, Low Rider, Fat Bob, Slim & Deluxe Models

(13) Fits 2018-2020 Fat Boy, FXDR & Breakout Models



## BIG SHOTS STAGGERED

- Power Chamber Crossover Technology
- Full Coverage Heat Shields
- Optional Quiet Baffle Available

Softail		
2018-2020	Chrome (14)	17941
2018-2020	Black (14)	47941
1986-2017	Chrome (15)	17939
1986-2017	Black (15)	47939

Baffles		
Multi	Quiet Baffle	21301
Multi	Super Quiet Baffle	21912

(14) Will not fit 2018-2020 Breakout, FXDR or Fat Boy models

(15) Does not fit FXCW Rocker, FXCWC Rocker C or 2009 FXSTSSE Springer Softail



## HI-OUTPUT 2-INTO-1 SHORT

- Deep, Throaty Note
- CNC Machined Billet End Cap
- Optional Quiet Baffle

Softail		
1986-2017	Black	46543
2013-2017	Chrome (16)	16545
2013-2017	Black (16)	46545

Baffles		
Multi	Quiet Baffle	23086

(16) Fits Breakout and CVO Breakout models



## BIG SHOTS LONG

- Full Coverage Heat Shields
- CNC Machined End Cap
- Fits Saddlebags with Extended Skirts

Softail		
2012-2017	Chrome (17)	17823
1986-2006	Chrome (18)	17923

Baffles		
1986-2017	Quiet Baffle	21301
1986-2017	Super Quiet Baffle	21912

(17) Does not fit FXCW Rocker, FXCWC Rocker C or 2009 FXSTSSE Springer Softail

(18) Longshots HS



FOR CLOSED COURSE COMPETITION USE ONLY. NOT INTENDED FOR STREET USE.

Full Product Offering: [vanceandhines.com](http://vanceandhines.com) | (800) 592-2529 | Santa Fe Springs, CA

@VANCEANDHINES



**SOFTAIL**





## SHORTSHOTS STAGGERED

- Signature Twin Slash End Treatment
- Full Coverage Heat Shields
- Optional Quiet Baffle Available

Softail		
2018-2020	Chrome (1)(2)	17233
2018-2020	Black (1)(2)	47233
2018-2020	Chrome (3)	17235
2018-2020	Black (3)	47235
2012-2017	Chrome	17225
2012-2017	Black	47225
1986-2011	Chrome (4)	17221
1986-2011	Black (4)	47221

Baffles		
Multi	Quiet Baffle	21301
Multi	Super Quiet Baffle	21912

(1) Fits 2018-2020 Street Bob, Low Rider, Fat Bob, Slim, Deluxe & Heritage Classic Models  
(2) Fits Sport Glide & Heritage Models with 21946 Saddlebag Bracket  
(3) Fits 2018-2020 Fat Boy, FXDR & Breakout Models  
(4) Oxygen sensor plug kit (16925) required when used on 1986-2006 models



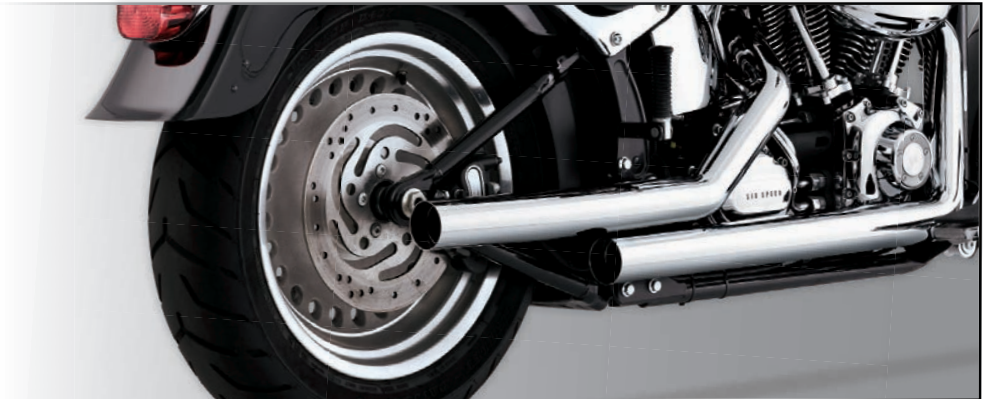
## STRAIGHTSHOTS

- Classic Staggered Drag Pipe Styling
- Full Coverage Heat Shields
- Optional Quiet Baffle Available

Softail		
1986-2011	Chrome (5)	17817

Baffles		
Multi	Quiet Baffle	21301
Multi	Super Quiet Baffle	21912

(5) Oxygen Sensor Plug Kit (16925) required when used on 1986-2006 models



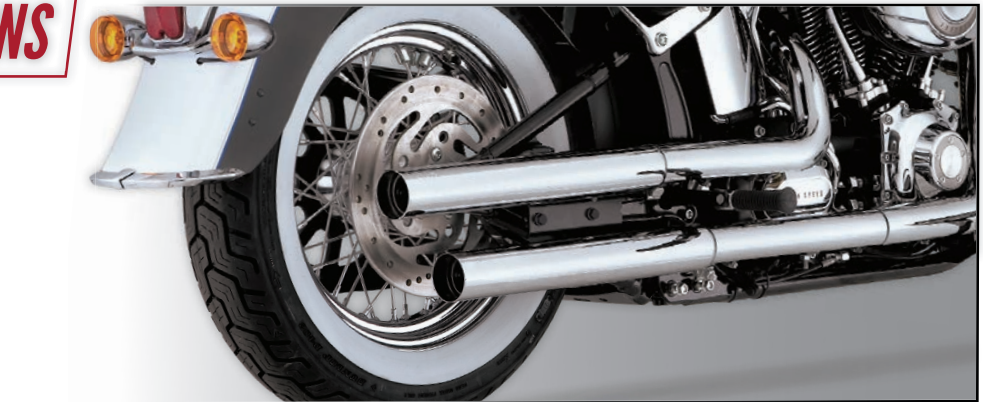
## STRAIGHTSHOTS HS SLIP-ONS

- 2.5-inch Round with Straight-Cut End Treatment
- Full Coverage Heat Shields
- Optional Quiet Baffle Available

Softail		
2007-2017	Chrome (6)	16831
2007-2017	Chrome (7)(8)	16833
2000-2006	Chrome (9)	16821

Baffles		
Multi	Quiet Baffle	21301
Multi	Super Quiet Baffle	21912

(6) Fits FLSTC Heritage, FXST Softail Standard, FXSTB Night Train, FXSTC Softail Custom, FXCW Rocker, FXCWC CVO Springer Softail (7) Fits FLSTN Deluxe, FLS Slim, FLSTSB Crossbones, FXSB Breakout (8) Does not fit FLSTNSE CVO Deluxe (9) Fits FLSTC Heritage, FXST Softail Standard, FXSTB Night Train



## SOFTAIL DUALS

- Classic True Dual Design
- Full Coverage Heat Shields
- Optional Quiet Baffle Available
- Fishtail and Slash-Cut Tips Optional

Softail		
2012-2017	Chrome	16893
1997-2011	Chrome (10)	16793

End Caps		
1997-2017	Fishtail End Cap Kit	16923

Baffles		
1997-2017	Quiet Baffle	21301
1997-2017	Super Quiet Baffle	21912

(10) Oxygen Sensor Plug Kit (16925) required when used on 1997-2006 models



## HI-OUTPUT SLIP-ONS

- Aggressive, Deep Tone
- Matte Black Finish
- Laser Engraved Riveted Badges

Softail		
2018-2020	Black (11)	46547

Baffles		
2018-2020	Quiet Baffle	21947

(11) Fits 2018-2020 Fat Bob models.



## ELIMINATOR 300 SLIP-ONS

- CNC Machined Billet End Caps
- 3-inch Round Muffler Body
- Available in Chrome, Satin Chrome or Wrinkle Black

Softail		
2018-2020	Chrome (12)	16712
2018-2020	Black (12)	46712
2018-2020	Satin Chrome (12)	16722
2018-2020	Chrome (13)	16716

Inserts		
2018-2020	Quiet Insert	21947

(12) Fits Street Bob, Low Rider, Slim, Fat Boy & Breakout  
(13) Fits Deluxe & Heritage Classic



## TWIN SLASH 3-INCH SLIP-ONS

- Signature Twin Slash End Treatment
- Full Coverage Heat Shields
- Available in Chrome or Wrinkle Black (On M8 Softail)

Softail		
2018-2020	Chrome (14)	16875
2018-2020	Black (14)	46875
2018-2020	Chrome (15)	16879
2007-2017	Chrome (16)	16835
2007-2017	Chrome (17)	16841
2007-2017	Chrome (18)	16843
2007-2017	Black (17)	46841
2007-2017	Black (18)	46843

Baffles		
Multi	Quiet Baffle	21899
Multi	Competition Baffle	21897

(14) Fits Street Bob, Low Rider, Slim, Fat Boy & Breakout  
(15) Fits Deluxe & Heritage Classic (16) Fits FXST Standard, FXSTC Custom, FLSTC Heritage Classic, FXSTB Night Train, FXCW Rocker, FXSB Breakout (17) Fits FLSTN Deluxe, FLS Slim, FLSTSB Cross Bones (18) Fits FLSTM Fat Boy, FLSTFB Fat Boy Lo, FXSTD Deuce



FOR CLOSED COURSE COMPETITION USE ONLY. NOT INTENDED FOR STREET USE.

Full Product Offering: [vanceandhines.com](https://vanceandhines.com) | (800) 592-2529 | Santa Fe Springs, CA

@VANCEANDHINES



**DYNA**





## STAINLESS 2-INTO-1 UPSWEEP

- High Grade 304 Stainless Steel (ASTM A269)
- Oversized 2-into-1 Merge Collector
- Megaphone Muffler
- Race Inspired Heat Shield
- Fits Forward & Mid Control Models\*

<i>Dyna</i>		
1991-2017	Brushed	27625



## PRO PIPE

- Broad, Usable Torque Increase
- Large Merge Collector
- Quiet and Competition Baffles Available
- 4.5-inch Muffler Body At Exit

<i>Dyna</i>		
2012-2017	Chrome	17569
2012-2017	Black	47525
<i>Baffles</i>		
Multi	Quiet Baffle	21906
Multi	Competition Baffle	26529



## BIG SHOTS STAGGERED

- Power Chamber Crossover Technology
- Full Coverage Heat Shields
- Optional Quiet Baffle Available

<i>Dyna</i>		
2006-2017	Chrome	17938
2006-2017	Black	47938
1991-2005	Chrome	17911
<i>Baffles</i>		
Multi	Quiet Baffle	21301
Multi	Super Quiet Baffle	21912



## BIG RADIUS 2-INTO-2

- Custom Bike Styling
- Radius Curved Louvered Baffles
- Full Coverage Heat Shields
- Optional Quiet Baffle Available

<i>Dyna</i>		
2012-2017	Chrome	26071
2012-2017	Black	46071
2012-2016	Chrome	26007
<i>Baffles</i>		
Multi	Quiet Baffle	23081
Multi	Standard Baffle	23711



## SHORTSHOTS STAGGERED

- Signature Twin Slash End Treatment
- Full Coverage Heat Shields
- Optional Quiet Baffle Available

<i>Dyna</i>		
2012-2017	Chrome	17227
2012-2017	Black	47227
2006-2011	Chrome	17217
2006-2011	Black	47217
1991-2005	Chrome	17213

<i>Baffles</i>		
Multi	Quiet Baffle	21301
Multi	Super Quiet Baffle	21912

## COMPETITION SERIES 2-INTO-1

- Lightweight Stainless Steel Construction
- Tapered and Stepped Head Pipes
- Slip-fit Merge Collectors
- Includes Wideband Sensor Ports
- Optional Quiet Insert Available

<i>Dyna</i>		
2006-2017	Brushed	75-115-4
2006-2017	Black	75-115-9

<i>Baffles</i>		
Multi	Quiet Baffle	7-60093

## HI-OUTPUT 2-INTO-1 SHORT

- Deep, Throaty Note
- CNC Machined Billet End Cap
- Optional Quiet Baffle

<i>Dyna</i>		
2006-2017	Black	46541

<i>Baffles</i>		
Multi	Quiet Baffle	23086

## STRAIGHTSHOTS HS SLIP-ONS

- 2.5-inch Round with Straight-Cut End Treatment
- Full Coverage Heat Shields
- Optional Quiet Baffle Available

<i>Dyna</i>		
1991-2017	Chrome (1)	16823

<i>Baffles</i>		
Multi	Quiet Baffle	21301
Multi	Super Quiet Baffle	21912

(1) Does not fit 2008-2017 FXDF Fat Bob, 2010-2017 FXDWG Wide Glide, 2014-2017 FXDL Low Rider or FLD Switchback

## TWIN SLASH 3-INCH SLIP-ONS

- Signature Twin Slash End Treatment
- Full Coverage Heat Shields
- Available in Chrome or Wrinkle Black (On M8 Softail)

<i>Dyna</i>		
1991-2017	Chrome (2)	16837
1991-2017	Black (2)	46837
2008-2017	Chrome (3)	16845
2008-2017	Black (3)	46845

<i>Baffles</i>		
Multi	Quiet Baffle	21899
Multi	Competition Baffle	21897

(2) Does not fit FXDF Fat Bob, 2010-2017 FXDWG Wide Glide, 2014-2017 FXDL Low Rider or FLD Switchback (3) Fits FXDF Fat Bob, 2010-2017 FXDWG Wide Glide



FOR CLOSED COURSE COMPETITION USE ONLY. NOT INTENDED FOR STREET USE.

Full Product Offering: [vanceandhines.com](http://vanceandhines.com) | (800) 592-2529 | Santa Fe Springs, CA

@VANCEANDHINES



***SPORTSTER***





## STAINLESS 2-INTO-1 UPSWEEP

- High Grade 304 Stainless Steel (ASTM A269)
- Oversized 2-into-1 Merge Collector
- Megaphone Muffler
- Race Inspired Heat Shield
- Fits Forward & Mid Control Models

Sportster		
2004-2020	Brushed	27627



## MINI-GRENADES

- Aggressive, Deep Tone
- Signature Three-Step Design
- CNC Machined Billet End Caps

Sportster		
2004-2020	Black	46874
Baffles		
Multi	Quiet Baffle	21839



## BIG RADIUS 2-INTO-2

- Custom Bike Styling
- Radius Curved Louvered Baffles
- Full Coverage Heat Shields
- Optional Quiet Baffle Available

Sportster		
2014-2020	Chrome	26067
2014-2020	Black	46067



## SHORTSHOTS STAGGERED

- Signature Twin Slash End Treatment
- Full Coverage Heat Shields
- Optional Quiet Baffle Available

Sportster		
2014-2020	Chrome	17229
2014-2020	Black	47229
2004-2013	Chrome (1)	17219
2004-2013	Black (1)	47219
1999-2003	Chrome	17223
1999-2003	Black	47223
Baffles		
Multi	Quiet Baffle	21301
Multi	Super Quiet Baffle	21912

(1) Oxygen Sensor Plug Kit (16925) required when used on 2004-2006 models



## TWIN SLASH 3-INCH SLIP-ONS

- Signature Twin Slash End Treatment
- Full Coverage Heat Shields
- Available in Chrome or Wrinkle Black (On M8 Softail)

Sportster		
2014-2020	Chrome	16861
2014-2020	Black	46861
2004-2013	Chrome	16839
2004-2013	Black	46839

Baffles		
Multi	Quiet Baffle	21899
Multi	Competition Baffle	21897



## 2-INTO-1 UPSWEEP

- CNC Machined Billet End Cap
- Optional Quiet Baffle
- Sculpted Collector Heat Shield

Sportster		
2007-2020	Black (2)	47624

(2) Not compatible with forward controls



## COMPETITION SERIES 2-INTO-1

- Lightweight Stainless Steel Construction
- Tapered and Stepped Head Pipes
- Slip-fit Merge Collectors
- Includes Wideband Sensor Ports
- Optional Quiet Insert Available

Sportster		
2014-2020	Brushed	75-118-4
2014-2020	Black	75-118-9
Baffles		
Multi	Quiet Baffle	7-60093



## STRAIGHTSHOTS

- Classic Staggered Drag Pipe Styling
- Full Coverage Heat Shields
- Optional Quiet Baffle Available

Sportster		
2004-2013	Chrome	17821
Baffles		
Multi	Quiet Baffle	21301
Multi	Super Quiet Baffle	21912



## STRAIGHTSHOTS HS SLIP-ONS

- 2.5-inch Round with Straight-Cut End Treatment
- Full Coverage Heat Shields
- Optional Quiet Baffle Available

Sportster		
2014-2020	Chrome	16863
2004-2013	Chrome	16819
Baffles		
Multi	Quiet Baffle	21301
Multi	Super Quiet Baffle	21912



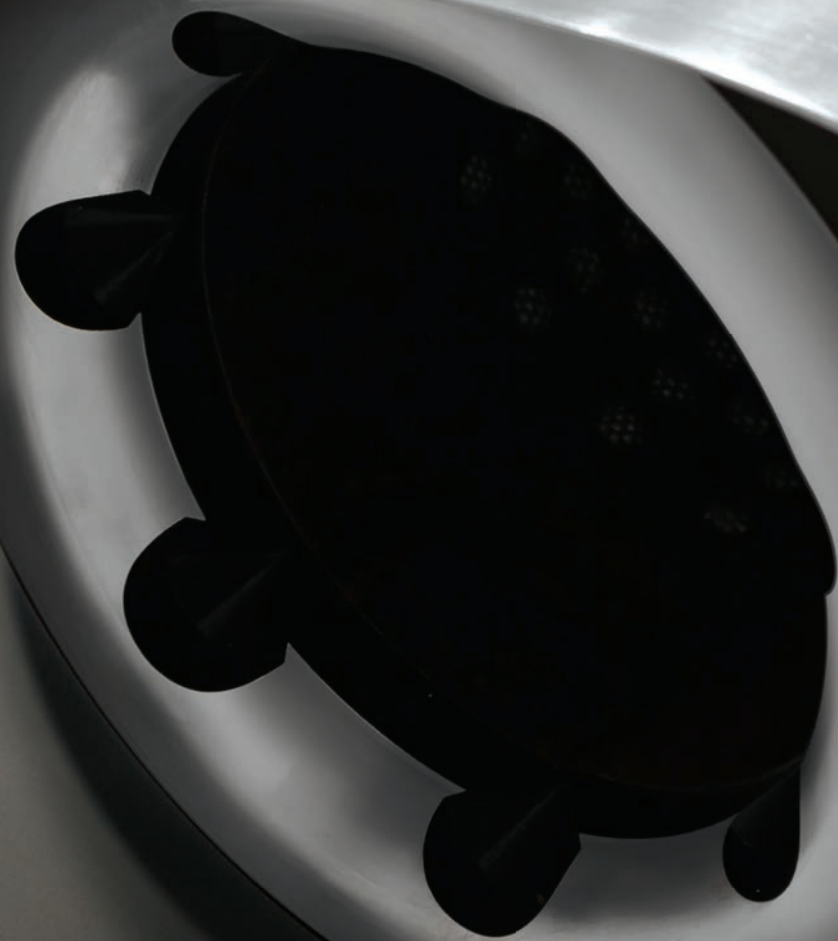
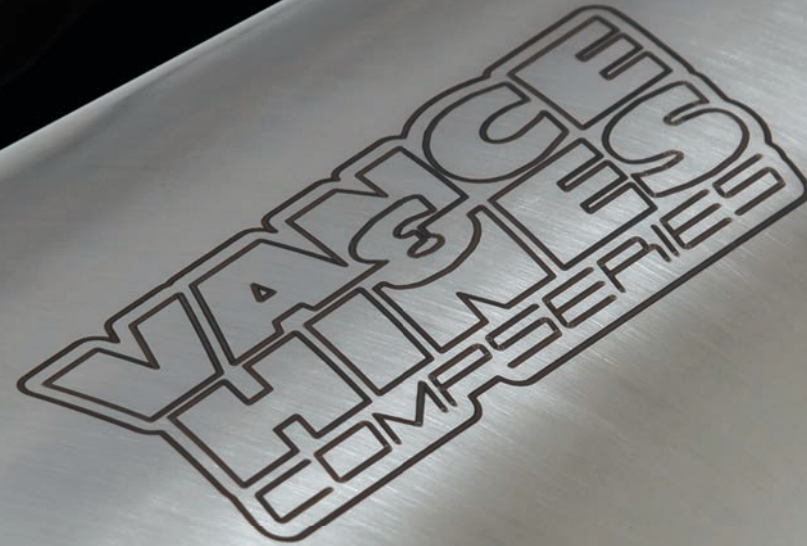
FOR CLOSED COURSE COMPETITION USE ONLY. NOT INTENDED FOR STREET USE.

Full Product Offering: [vanceandhines.com](http://vanceandhines.com) | (800) 592-2529 | Santa Fe Springs, CA

@VANCEANDHINES



***STREET / V-ROD***





## HI-OUTPUT SLIP-ON

- Aggressive, Deep Tone
- Matte Black Finish
- Laser Engraved Riveted Badges

<b>Street</b>		
2014-2020	Black (1)	47943
<b>Baffles</b>		
2014-2020	Quiet Baffle	21841

(1) Fits 2015-2020 Street 500/750 and 2017-2019 Street Rod



## COMPETITION SERIES SLIP-ON

- Lightweight Stainless Steel Construction
- Slip-fit to OEM Head Pipes
- Optional Quiet Insert Available

<b>Street</b>		
2014-2020	Black	47937
<b>Baffles</b>		
Multi	Quiet Baffle	7-60093



## COMPETITION SERIES SLIP-ON

- Lightweight Stainless Steel Construction
- Slip-fit to OEM Head Pipes
- Optional Quiet Insert Available

<b>V-Rod</b>		
2009-2017	Pearl Nickel (Muscle)	75-110-14
<b>Baffles</b>		
Multi	Quiet Baffle*	7-60093

\* Requires 2 pcs for V-Rod



## COMPETITION SERIES 2-INTO-1

- Lightweight Stainless Steel Construction
- Tapered and Stepped Head Pipes
- Slip-fit Merge Collectors
- Includes Wideband Sensor Ports
- Optional Quiet Insert Available

<b>V-Rod</b>		
2002-2017	Black (2)	75-113-9
2009-2017	Black (Muscle) (3)	75-116-9
2002-2017	Brushed (2)	75-113-4
2009-2017	Brushed (Muscle) (3)	75-116-4
<b>Baffles</b>		
Multi	Quiet Baffle	7-60093

(2) Fits VRSCA/B/W V-Rod, VRSCD Night Rod and VRSCDX Night Rod Special  
(3) Fits VRSCF V-Rod Muscle



## HEADER WRAP

- Two Laser Cut Clamps
- Six Locking Stainless Steel Ties
- 25-foot Black Wrap Tape Roll
- Wraps Two Headers Thoroughly

Multi	Header Wrap Kit	26523
-------	-----------------	-------



## FENDER ELIMINATOR

- Stainless Steel Construction
- Matte Black Ceramic Finish
- Clean License Plate Frame Included
- All Hardware Included to Remount OEM Lighting

2017-2020	Fender Eliminator Kit (4)	16041
-----------	---------------------------	-------

(4) Fits 2017-2020 Street Rod models only



## ACCESSORIES

Multi	O2 Sensor Plug Kit (18mm)	16925
Multi	O2 Sensor Plug Kit (12mm)	16935
Multi	VO2 90 Rain Sock	22928



Intake Rain Sock



O2 Sensor Plug Kit

FOR CLOSED COURSE COMPETITION USE ONLY. NOT INTENDED FOR STREET USE.

Full Product Offering: [vanceandhines.com](http://vanceandhines.com) | (800) 592-2529 | Santa Fe Springs, CA

@VANCEANDHINES



# PRODUCTION TWINS

## READY. SET. RACE...

**THE XG750R IS NOW AVAILABLE FOR PURCHASE!**

Starting at \$35,999, the race-winning Harley-Davidson XG750R is primed to contend for the AFT Production Twins Championship with over \$300,000\* in contingency prize money at stake.

Deliveries will begin immediately, supply is limited, with priority given to Harley-Davidson dealerships. For details and ordering information, please contact [xg750r@vanceandhines.com](mailto:xg750r@vanceandhines.com)



**XG750R NEW!**

COMPETITION ONLY

2020 Production Twins XG750R 38-0000P

Contact us for more information:  
(317) 852-9057 | [XG750R@vanceandhines.com](mailto:XG750R@vanceandhines.com)

**Engine Type:** Harley-Davidson  
60° V-Twin XG750R

**Cooling:** Liquid

**Fuel Delivery:** Fuel Injection

**Valve Actuation:** SOHC

**Displacement:** 798cc

**Bore:** 87.75mm

**Stroke:** 66mm

**Compression Ratio:** 12.6:1

**Gearbox:** 4 speed

**Air Induction:** 38mm Throttle Body

**Clutch:** Hinson Multi-Disc Slipper Clutch

**Exhaust:** Vance & Hines 2 - 2

**Suspension:** Ohlins

**Body Work:** XG750R Carbon Fiber

**Wheels:** Performance Machine Flat Tracker

FOR CLOSED COURSE COMPETITION USE ONLY. NOT INTENDED FOR STREET USE.

Full Product Offering: [vanceandhines.com](http://vanceandhines.com) | (800) 592-2529 | Santa Fe Springs, CA

@VANCEANDHINES



VALVES

- Precision CNC Machined From a Stainless One Piece Forging for Higher Strength & Durability
- High Grade Allows Design to Withstand High Heat and Maintain Roundness
- Chrome Coated
- Micro Polished Stem for Smoother Finish and Less Friction Resulting in Improved Performance
- Multi Angle Back Cuts for Enhanced Flow
- 7 Millimeter Stem

M8 Valves (Contains 4 QTY of each piece)		
2017-2020	1.57" Intake- Stainless	35-4525
2017-2020	1.61" intake- Stainless	35-4526
Twin Cam Valves (Contains 2pcs/ Set)		
2005-2017	1.575" STD Exh- Stainless (1)	35-4510
2005-2017	1.610" Exh- Stainless (+.035) (1)	35-4511
2005-2017	1.630" Exh- Stainless (+.055) (1)	35-4512
2005-2017	1.650" Exh- Stainless (+.075) (1)	35-4513
2005-2017	1.630" Exh- Inconel (+.055) (1)	35-4514
2005-2017	1.805" STD Int- Stainless (1)	35-4520
2005-2017	1.900" Int- Stainless (+.095) (1)	35-4521
2005-2017	2.000" Int Stainless (+.195) (1)	35-4522
2005-2017	1.900" Int-Stainless Hollow Stem (+.095) (1)	35-4523
2005-2017	2.000" Int-Stainless Hollow Stem (+.195) (1)	35-4524
Twin Cam Valve Kits (Contains 2 QTY each Valve, Spring, Retainer, Spring Base, Viton Valve Seal & Keeper)		
2005-2017	1.805" STD Valve/ Perf Springs (1)	35-4530
2005-2017	1.900" Int Valve/ Perf Springs (1)	35-4531
2005-2017	2.000" Int Valve/ Perf Springs (1)	35-4532
2005-2017	1.575" Exh Valve/ Perf Springs (1)	35-4540
2005-2017	1.610" Exh Valve/ Perf Springs (1)	35-4541
2005-2017	1.630" Exh Valve/ Perf Springs (1)	35-4542
2005-2017	1.650" Exh Valve/ Perf Springs (1)	35-4543

(1) Fits 2005-2017 Twin Cam, 2004-2020 XL Sportster & 2009-2013 XR Sportster

VALVES SPRINGS

- Retainers Made From 4140 Chromoly Steel
- Heat Treated & Processed to Maintain High Strength and Lightweight Design
- Keepers Type FMOD7 Lock Angle 7°, Triple Radius Groove and Standard Install Height
- Equipped with Chromoly Spring Bases
- Kit Comes with Viton Seals Designed for Maximum Retention of Elastic Properties Along with Excellent Resistance to Fluids, Heat and Aging

Valve Spring Kit (Contains 4 QTY of each piece)		
2004-2020	Springs, Retainer, Spring Base, Viton Seal, & Keeper (1)(2)	35-4500

(1) Fits 2005-2017 Twin Cam, 2004-2020 XL Sportster & 2009-2013 XR Sportster  
(2) Excludes Milwaukee Eight Equipped Models

CAMSHAFTS

- “Bolt-In” Camshafts
- Features Silent Ramp Profile to Eliminate Valvetrain Noise
- 0.575” lift 240° on Both Intake & Exhaust

Cam Set (Contains camshaft set, chest gasket set, bearings)		
2006-2017	Big Twin Cam Set (3)	35-4551

(3) Fits 2006-2017 Dyna models, 2007-2016 Touring models and 2007-2017 Softail models



LIFTERS

- Tighter I.D. Grind Resulting in Substantially Lower Leak Down
- Features “Direct-Shot” Oiling System Sending Oil to Axle and Roller Needle Bearings
- Allows for Use of Higher Spring Pressure and More RPM Capability

Lifter Set (Contains 2 QTY of each piece)		
1999-2020	Harley Lifter Set (4)	35-4553

(4) Fits 2017-2020 Milwaukee Eight, 1999-2017 Twin Cam, 2000-2020 XL Sportster, 2009-2013 XR Sportster

PUSHRODS

- Hardened & Tempered Chromoly
- Specially Developed for Extreme Spring Pressures
- 7/16” x 0.095” Single Taper 5/16” x 24 TPI

Pushrods (Contains 2 QTY EXH pushrods & INT pushrods)		
1999-2017	Twin Cam Pushrod Set (5)	35-4552

(5) Excludes Milwaukee Eight Equipped Models

PISTONS

- Forged from 2618 Aluminum
- Moly-Coated Piston Skirts
- High-Strength, Light Weight Chromoly Wrist Pin
- Phosphate Coating to Reduce Micro-Welding and Pin Galling

Pistons (Contains piston set, wrist pin, ring set, pin locks)		
1999-2017	Big Bore 107” Piston Set (6)(7)(8)(9)	35-4554

(6) Fits 2007-2016 Touring models  
(7) Fits 2007-2017 Dyna & Softail models  
(8) Fits 1999-2006 Dyna & Touring models equipped with 4-3/8” flywheels  
(9) Fits 2000-2006 Softail models equipped with 4-3/8” flywheels

VALVE GUIDES

- Direct O.E. Replacement (Verify Against O.E. Parts/ May Require Additional Machining)
- Shouldered Guide for Positive Stop
- Designed for Durability and Longevity
- Precision Machined for Concentricity
- Tapered to Prevent Galling During Installation

Valve Guides (Sold Individually)		
2006-2020	Intake/Exhaust Cast Iron Guide (9)	35-4508

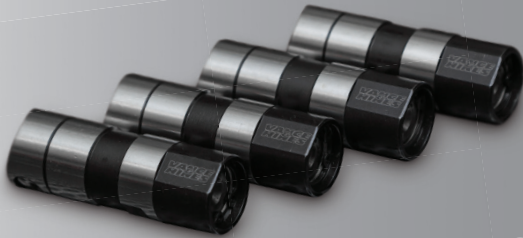
(9) Fits 2005-2017 Twin Cam, 2004-2020 XL Sportster

VALVE SEATS

- Proprietary Alloy Designed with High-Level Thermal Properties
- Engineered and Tested to Perform Under the Most Extreme Conditions
- Designed for Durability and Longevity
- Excellent Machinability and Wear Resistance

Valve Seat Kit (Contains 2 QTY per Kit)		
2005-2020	Intake Valve Seat Kit (9)	35-4518
2005-2020	Exhaust Valve Seat Kit (9)	35-4517

(9) Fits 2005-2017 Twin Cam, 2004-2020 XL Sportster



FOR CLOSED COURSE COMPETITION USE ONLY. NOT INTENDED FOR STREET USE.

Full Product Offering: vanceandhines.com | (800) 592-2529 | Santa Fe Springs, CA

@VANCEANDHINES



**RACING**

**SEE YOU AT  
THE RACES.**









**FX**

**WORLD CHAMPION**

*Andrew Hines*



**ANDREW HINES** / 6-TIME NHRA® PRO STOCK MOTORCYCLE WORLD CHAMPION

13861 Rosecrans Ave. Santa Fe Springs, CA 90670 | 800-592-2529 | [info@vanceandhines.com](mailto:info@vanceandhines.com) | [vanceandhines.com](http://vanceandhines.com) | [@vanceandhines](https://www.instagram.com/vanceandhines)

**VANCE  
HINES**